

Requirements and Compatibility

For user manuals and dimensional drawings, visit the product page resources tab on ni.com.

Last Revised: 2014-11-06 07:15:00.0

## NI LabVIEW RIO Evaluation Kit



- Board-level NI reconfigurable I/O (RIO) evaluation device
- Hardware configuration wizard
- 90-day extended evaluation of LabVIEW, LabVIEW FPGA Module, and LabVIEW Real-Time Module
- Evaluation daughter board for easy I/O interfacing

### Requirements and Compatibility

#### OS Information

- Windows

#### Driver Information

- NI-RIO

#### Software Compatibility

- LabVIEW
- LabVIEW FPGA Module
- LabVIEW Real-Time Module

[Back to Top](#)

### Comparison Tables

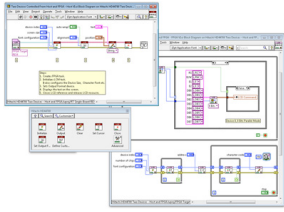
| Features                                    | Additional information  |
|---|---|
| Function generator (square, sine, triangle) | 0 to 1 kHz, 0 to 10 kHz, or 0 to 100 kHz output frequency range |
| Hitachi HD44780 LCD character display       | Programmed using a free LabVIEW driver                          |
| Quadrature encoder                          | 24 cycles/rev   |
| Potentiometer                               | 100K linear   |
| 6 user-programmable LEDs                    |   |
| Centigrade temperature sensor               |   |
| 6 analog inputs and 2 analog outputs        |   |
| 5 push buttons                              |   |
| 4 digital I/O lines                         |   |

[Back to Top](#)

### Software Recommendations

#### LCD Character Display Driver

- Works with single-chip modules up to 4x20 or cascaded to 4x40 characters
- NI LabVIEW FPGA and LabVIEW Real-Time API provided
- Requires LabVIEW FPGA-enabled target with 8 or 12 digital I/O lines
- Scalable implementation for 1 or more displays connected in parallel



- Compatibility with both 4- and 8-bit data bus displays
- Supported in LabVIEW 2010 and later

[Back to Top](#)

---

## Support and Services

### Technical Support

Get answers to your technical questions using the following National Instruments resources.

- Support** - Visit [ni.com/support](http://ni.com/support) to access the NI KnowledgeBase, example programs, and tutorials or to contact our applications engineers who are located in NI sales offices around the world and speak the local language.
- Discussion Forums** - Visit [forums.ni.com](http://forums.ni.com) for a diverse set of discussion boards on topics you care about.
- Online Community** - Visit [community.ni.com](http://community.ni.com) to find, contribute, or collaborate on customer-contributed technical content with users like you.

### Repair

While you may never need your hardware repaired, NI understands that unexpected events may lead to necessary repairs. NI offers repair services performed by highly trained technicians who quickly return your device with the guarantee that it will perform to factory specifications. For more information, visit [ni.com/repair](http://ni.com/repair).

### Training and Certifications

The NI training and certification program delivers the fastest, most certain route to increased proficiency and productivity using NI software and hardware. Training builds the skills to more efficiently develop robust, maintainable applications, while certification validates your knowledge and ability.

- Classroom training in cities worldwide** - the most comprehensive hands-on training taught by engineers.
- On-site training at your facility** - an excellent option to train multiple employees at the same time.
- Online instructor-led training** - lower-cost, remote training if classroom or on-site courses are not possible.
- Course kits** - lowest-cost, self-paced training that you can use as reference guides.
- Training memberships** and training credits - to buy now and schedule training later.

Visit [ni.com/training](http://ni.com/training) for more information.

### Extended Warranty

NI offers options for extending the standard product warranty to meet the life-cycle requirements of your project. In addition, because NI understands that your requirements may change, the extended warranty is flexible in length and easily renewed. For more information, visit [ni.com/warranty](http://ni.com/warranty).

### OEM

NI offers design-in consulting and product integration assistance if you need NI products for OEM applications. For information about special pricing and services for OEM customers, visit [ni.com/oem](http://ni.com/oem).

### Alliance

Our Professional Services Team is comprised of NI applications engineers, NI Consulting Services, and a worldwide National Instruments Alliance Partner program of more than 700 independent consultants and integrators. Services range from start-up assistance to turnkey system integration. Visit [ni.com/alliance](http://ni.com/alliance).

[Back to Top](#)

---

©2012 National Instruments. All rights reserved. CompactRIO, FieldPoint, LabVIEW, National Instruments, NI, and ni.com are trademarks of National Instruments. Other product and company names listed are trademarks or trade names of their respective companies. A National Instruments Alliance Partner is a business entity independent from National Instruments and has no agency, partnership, or joint-venture relationship with National Instruments.

[My Profile](#) | [RSS](#) | [Privacy](#) | [Legal](#) | [Contact NI](#) © 2014 National Instruments Corporation. All rights reserved.